



2024-2025

Double Bass

Audition

Packet

Orchestras

Young Artists Orchestra (YAO)

The Young Artists Orchestra (YAO), the most advanced of our ensembles, is composed of approximately 70 to 80 members and performs four to six concerts annually, including one side-by-side concert with the Colorado Symphony. Concerts are performed in venues such as Boettcher Concert Hall, area churches, and Gates Concert Hall at The Newman Center. Students receive occasional coachings from Colorado Symphony Members or university faculty throughout the season and attend a weekend retreat in September. Recent repertoire includes Sibelius: Symphony no. 2, Bernstein: *Symphonic Dances from West Side Story*, Jennifer Higdon: *Cold Mountain Suite*, and Beethoven: Symphony No. 3.

Placement in YAO is determined by audition. Membership is open to musicians between the ages of 12 and 23. YAO rehearses Saturday mornings from 9:00am-12:30pm at the University of Denver's Lamont School of Music (2344 E Iliff Ave, Denver).

Conservatory Orchestra (CO)

The Conservatory Orchestra (CO) is our intermediate ensemble for students who aspire to grow musically towards YAO. Composed of approximately 60 to 70 members, the Conservatory Orchestra performs three to four concerts annually in conjunction with the String Ensemble. Concerts are performed in venues such as Gates Concert Hall at The Newman Center, area churches, and Boettcher Concert Hall. Students receive occasional coachings throughout the season from Colorado Symphony Members or university faculty and attend a weekend retreat in September. Recent repertoire includes Sarasate: *Zigeunerweisen*, Arturo Márquez: *Conga del Fuego Nuevo*, Price: Symphony no. 1 (mvt. II, III), and Copland: "Hoedown" from *Rodeo*.

Placement in the Conservatory Orchestra is by audition. Membership is open to musicians between the ages of 10 and 18. Conservatory Orchestra rehearses Monday evenings from 6:30pm-8:30pm at Bethany Lutheran Church (4500 E Hampden Ave, Cherry Hills Village).

String Ensemble (SE)

The String Ensemble (SE) gives young music students an opportunity to experience the great wealth of string orchestra literature. The ensemble is designed for those who are developing a facility in bowing techniques, reading music, and the use of vibrato. Composed of approximately 30 to 40 members, the String Ensemble performs three to four concerts in conjunction with the Conservatory Orchestra. Students receive occasional coachings from Colorado Symphony Members or university faculty throughout the season and attend a one-day retreat in September. Recent repertoire includes Vivaldi: Concerto for Strings RV121, Britten: Simple Symphony mvt. I, Rutter: *Suite for Strings*, mvt. IV, and Price: *The Old Boatman*.

Placement in the String Ensemble is determined by audition. Membership is open to musicians between the ages of 7 and 13. String Ensemble rehearses Monday evenings from 5:30pm-7:00pm at Bethany Lutheran Church (4500 E Hampden Ave, Cherry Hills Village).

Audition Requirements

1. Scales:

- **String Ensemble & Conservatory Orchestra** see the enclosed materials (SE page 4, CO page 5) appropriate to the orchestra for which you are auditioning.
- **Young Artists Orchestra**: Prepare 2-octave major and melodic minor scales up to 3 sharps and 3 flats, slurring/articulation according to your usual practice (consult your private teacher if needed), no slower than quarter notes at 90 bpm. Judges will select a scale at the audition.

2. A one-minute excerpt of a solo piece or etude showing your highest level of development both technically and musically.

3. Orchestral excerpt(s) as defined below. *Note that any marked bowings are recommendations; alteration will not disqualify candidates.*

- CANDIDATES APPLYING FOR **STRING ENSEMBLE** prepare the enclosed excerpts from:
 - **Beethoven: Symphony no. 6, mvt. III pickup to measure 53 to 75**
- CANDIDATES APPLYING FOR **CONSERVATORY ORCHESTRA** prepare the enclosed excerpts from:
 - **Beethoven: Symphony no. 5, mvt. III pickup to measure 141 to reh. B (downbeat)**
 - **Schubert: Symphony No. 8, mvt. II measure 24 to 51**
- CANDIDATES APPLYING FOR **YOUNG ARTISTS ORCHESTRA** prepare the enclosed excerpts from:
 - **Beethoven: Symphony no. 9, mvt. IV, measure 8 to 90 (skip rests/long tones)**
 - **Britten: *Young Person's Guide to the Orchestra*, variation H**

****Note: if you are auditioning for more than one orchestra,
please prepare the required excerpts for the higher level orchestra.****

4. Possible sight-reading as determined by the audition committee.

The excerpts are meant to challenge your musicianship. Below are a few suggestions to assist your audition preparation.

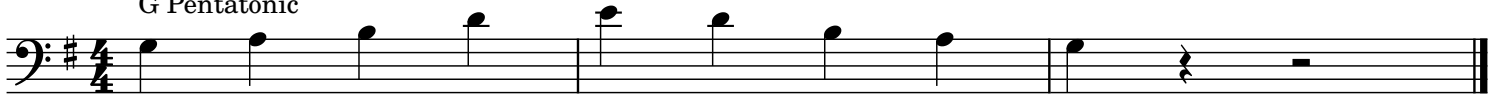
- **Play the music in the right tempo:** If tempos are not indicated in your excerpts, please work with your teacher and listen to reputable orchestra recordings to determine the correct speed. Frequently, candidates' tempi are unsteady and often *way too fast*! Judges are not listening to hear how fast you can play; rather, they are listening to see if you can play the piece correctly at an appropriate tempo. Rushing and dragging are things to avoid. Practice with a metronome and record yourself playing these excerpts to ensure accuracy.
- **Play with dynamic contrast:** Often judges comment that candidates ignore dynamic markings, especially the softer end of the dynamic spectrum. Remember that music is more than rhythms and pitches: first and foremost music is sound. Sell your performance!
- **Divisi and rests:** All players should learn **top** divisi/notes unless explicitly noted otherwise. Also, unless otherwise marked, long rests (more than two measures) should be played as unmeasured pauses in the audition.

Scales: Double Bass - String Ensemble

CHOOSE 1

♩ = 120

G Pentatonic



Scales: Double Bass - Conservatory Orchestra

CHOOSE 1--perform both bowings

♩ = 120

G Major



Alternate Bowing



Bb Major



Alternate Bowing



A Major



Alternate Bowing



SE:

Beethoven: Symphony no. 6, mvt. 3

Pickup to measure 53 to 75 (*play bottom line when it splits*)

Lustiges Zusammensein der Landleute

Allegro (♩ = 108)

The image displays a musical score for the third movement of Beethoven's Symphony No. 6, titled 'Lustiges Zusammensein der Landleute' (Merry Gathering of the Peasants). The tempo is marked 'Allegro' with a quarter note equal to 108 beats per minute. The score is written for a full orchestra, with parts for Violins (Va.), Violas (Vc.), Cellos (Vc., Kb.), and Double Basses (Kb.). The key signature is one flat (B-flat major or D minor), and the time signature is 3/4. The score is divided into systems, with measures 16, 39, 54, and 70 marked at the beginning of their respective systems. The first system (measures 16-38) features a pickup to measure 53, with measures 1-6 of the pickup marked above the staff. The second system (measures 39-53) continues the pickup, with measures 1-6 marked above the staff. The third system (measures 54-70) shows the main body of the movement, with measures 1-6 marked above the staff. The fourth system (measures 71-75) concludes the pickup, with measures 1-6 marked above the staff. The score includes various dynamic markings such as *pp* (pianissimo), *cresc.* (crescendo), and *sf* (sforzando). The bottom line of the score is highlighted in the pickup section, indicating where to play when it splits.

CO:

Beethoven: Symphony no. 4, mvt. III pickup to measure 141 to reh. B (downbeat)

h.= 84

137 unis. *p* *f* *v*

147

158 1. 2. *f* *v* *v* *v*

166 *v*

175 1 2 3 4 5 6

188 Vello Cb. **B** *f*

→

CO:

Schubert: Symphony No. 8, mvt. II measure 24 to 51

Andante con moto

The musical score for the Contrabass part, measures 24 to 51, is written in bass clef with a key signature of two sharps (F# and C#) and a 3/8 time signature. The tempo is marked "Andante con moto". The score includes various musical notations such as triplets, slurs, and dynamic markings.

Measures 24-28: *pizz.* (pizzicato), *pp* (pianissimo), triplet of eighth notes, *fp* (fortissimo).

Measures 29-33: *arco* (arco), *pp* (pianissimo), *f* (forte), *A.* (Allegretto), *p* (piano), *pp* (pianissimo), *fp* (fortissimo).

Measures 34-38: *arco* (arco), *cresc.* (crescendo), *pp* (pianissimo), *ppp* (pianississimo), *pizz.* (pizzicato), *pp* (pianissimo), *fp* (fortissimo).

Measures 39-43: *arco* (arco), *cresc.* (crescendo), *pp* (pianissimo), *ppp* (pianississimo), *pizz.* (pizzicato), *pp* (pianissimo), *fp* (fortissimo).

Measures 44-48: *arco* (arco), *cresc.* (crescendo), *pp* (pianissimo), *ppp* (pianississimo), *pizz.* (pizzicato), *pp* (pianissimo), *fp* (fortissimo).

Measures 49-51: *arco* (arco), *cresc.* (crescendo), *pp* (pianissimo), *ppp* (pianississimo), *pizz.* (pizzicato), *pp* (pianissimo), *fp* (fortissimo).

YAO:

Beethoven: Symphony no. 9, mvt. IV, measure 8 to 90 (skip rests/long tones)

Presto $\text{♩} = 96$

Legni

Fag.

dim. *p*

Fag.

Allegro ma non troppo $\text{♩} = 88$

div. *pp*

Tempo I

unis. *f* *ff*

ritard. *dim.*

poco Adagio

Vello. **Vivace**

Tempo I

Vello arco

Adagio cantabile

f *dim.* **Fag. I**

Tempo I Allegro

p *cresc.* *ff*

Allegro assai $\text{♩} = 80$

Tempo I Allegro

Fag. I *f* *f*

Fag.

4 YAO Britten: *Young Person's Guide to the Orchestra*
 VARIATION H Bass

Comminciando lento ma poco a poco accel.

Soli
pp
poco a poco cresc.
al Allegro
ff
veloce
gliss.
sf
mf espr.
f
f
f
cresc.
 Comminciando lento ma accel.
ff rall. molto
pp
poco a poco cresc.
al Allegro
ff
veloce
gliss.
fz
4 2 Soli
pizz. pp
vi de
(.)