



**2024-2025**

**Viola**

**Audition**

**Packet**

# Orchestras

## Young Artists Orchestra (YAO)

The Young Artists Orchestra (YAO), the most advanced of our ensembles, is composed of approximately 70 to 80 members and performs four to six concerts annually, including one side-by-side concert with the Colorado Symphony. Concerts are performed in venues such as Boettcher Concert Hall, area churches, and Gates Concert Hall at The Newman Center. Students receive occasional coachings from Colorado Symphony Members or university faculty throughout the season and attend a weekend retreat in September. Recent repertoire includes Sibelius: Symphony no. 2, Bernstein: *Symphonic Dances from West Side Story*, Jennifer Higdon: *Cold Mountain Suite*, and Beethoven: Symphony No. 3.

Placement in YAO is determined by audition. Membership is open to musicians between the ages of 12 and 23. YAO rehearses Saturday mornings from 9:00am-12:30pm at the University of Denver's Lamont School of Music (2344 E Iliff Ave, Denver).

## Conservatory Orchestra (CO)

The Conservatory Orchestra (CO) is our intermediate ensemble for students who aspire to grow musically towards YAO. Composed of approximately 60 to 70 members, the Conservatory Orchestra performs three to four concerts annually in conjunction with the String Ensemble. Concerts are performed in venues such as Gates Concert Hall at The Newman Center, area churches, and Boettcher Concert Hall. Students receive occasional coachings throughout the season from Colorado Symphony Members or university faculty and attend a weekend retreat in September. Recent repertoire includes Sarasate: *Zigeunerweisen*, Arturo Márquez: *Conga del Fuego Nuevo*, Price: Symphony no. 1 (mvt. II, III), and Copland: "Hoedown" from *Rodeo*.

Placement in the Conservatory Orchestra is by audition. Membership is open to musicians between the ages of 10 and 18. Conservatory Orchestra rehearses Monday evenings from 6:30pm-8:30pm at Bethany Lutheran Church (4500 E Hampden Ave, Cherry Hills Village).

## String Ensemble (SE)

The String Ensemble (SE) gives young music students an opportunity to experience the great wealth of string orchestra literature. The ensemble is designed for those who are developing a facility in bowing techniques, reading music, and the use of vibrato. Composed of approximately 30 to 40 members, the String Ensemble performs three to four concerts in conjunction with the Conservatory Orchestra. Students receive occasional coachings from Colorado Symphony Members or university faculty throughout the season and attend a one-day retreat in September. Recent repertoire includes Vivaldi: Concerto for Strings RV121, Britten: Simple Symphony mvt. I, Rutter: *Suite for Strings*, mvt. IV, and Price: *The Old Boatman*.

Placement in the String Ensemble is determined by audition. Membership is open to musicians between the ages of 7 and 13. String Ensemble rehearses Monday evenings from 5:30pm-7:00pm at Bethany Lutheran Church (4500 E Hampden Ave, Cherry Hills Village).

# Audition Requirements

## 1. Scales:

- **String Ensemble & Conservatory Orchestra** see the enclosed materials (SE page 4, CO page 5) appropriate to the orchestra for which you are auditioning.
- **Young Artists Orchestra**: Prepare 3-octave major and melodic minor scales up to 3 sharps and 3 flats, slurring/articulation according to your usual practice (consult your private teacher if needed), no slower than quarter notes at 90 bpm. Judges will select a scale at the audition.

**2. A one-minute excerpt of a solo piece or etude** showing your highest level of development both technically and musically.

**3. Orchestral excerpt(s)** as defined below. *Note that any marked bowings are recommendations; alteration will not disqualify candidates.*

- CANDIDATES APPLYING FOR **STRING ENSEMBLE** prepare the enclosed excerpts from:
  - **Beethoven: Symphony no. 6, mvt. III, pickup to measure 53 to 75**
- CANDIDATES APPLYING FOR **CONSERVATORY ORCHESTRA** prepare the enclosed excerpts from:
  - **Glinka: *Ruslan and Ludmilla* Overture, beginning to reh. A**
  - **Schubert: Symphony No. 8, mvt. I measure 73 to 99**
- CANDIDATES APPLYING FOR **YOUNG ARTISTS ORCHESTRA** prepare the enclosed excerpts from:
  - **Beethoven: Symphony no. 9, mvt. IV measure 140 to 164**
  - **Mendelssohn: *Midsummer Night's Dream*, Scherzo measure 17 to reh. D**

***\*Note: if you are auditioning for more than one orchestra,  
please prepare the required excerpts for the higher level orchestra.\****

**4. Possible sight-reading** as determined by the audition committee.

The excerpts are meant to challenge your musicianship. Below are a few suggestions to assist your audition preparation.

- **Play the music in the right tempo:** If tempos are not indicated in your excerpts, please work with your teacher and listen to reputable orchestra recordings to determine the correct speed. Frequently, candidates' tempi are unsteady and often *way too fast*! Judges are not listening to hear how fast you can play; rather, they are listening to see if you can play the piece correctly at an appropriate tempo. Rushing and dragging are things to avoid. Practice with a metronome and record yourself playing these excerpts to ensure accuracy.
- **Play with dynamic contrast:** Often judges comment that candidates ignore dynamic markings, especially the softer end of the dynamic spectrum. Remember that music is more than rhythms and pitches: first and foremost music is sound. Sell your performance!
- **Divisi and rests:** All players should learn **top** divisi/notes unless explicitly noted otherwise. Also, unless otherwise marked, long rests (more than two measures) should be played as unmeasured pauses in the audition.

# Scales: Viola - String Ensemble

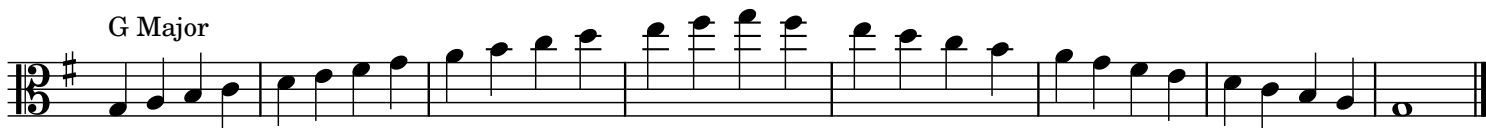
CHOOSE 1

♩ = 120

D Major



G Major

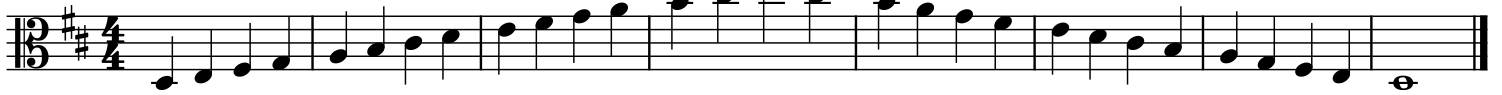


# Scales: Viola - Conservatory Orchestra

CHOOSE 1--perform both bowings

♩ = 120

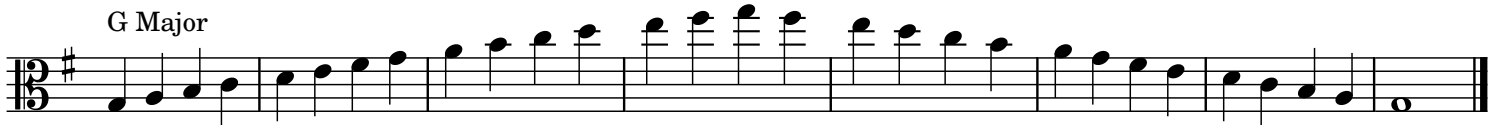
D Major



Alternate Bowing



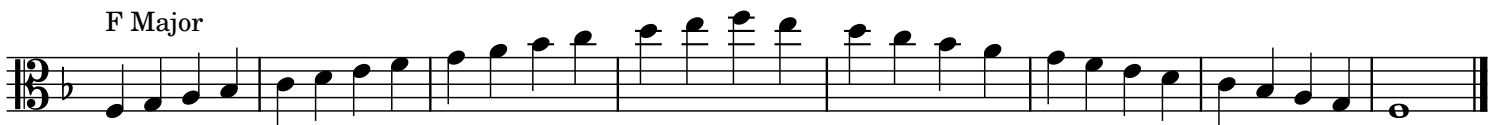
G Major



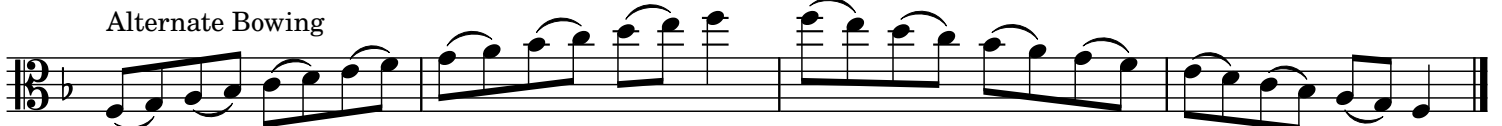
Alternate Bowing



F Major



Alternate Bowing



## Beethoven: Symphony no. 6, mvt. III, pickup to measure 53 to 75

[illegible]

CO:  
Viola

Mikhail Glinka  
Ruslan and Ludmilla Overture

**Presto**  $\text{♩} = 135$

*ff* *ff* *ff brillante* *mf* *sf* *mf* *mf* *ff* *mf* *sf*

**A** **B**

*pizz.* *arco.* *pizz.* *arco.*

3 3

**CO:**

60

G. P. 1 B

73

80

87

96

106 pizz. 7



Beethoven — Symphony No. 9  
Viola

13

YAO:

Beethoven: Symphony no. 9, mvt. IV measure 140 to 164

130

138

146

154

162

169

*cresc.* *p*

*cresc.* *p*

*cresc.*

*f*

The image displays a musical score for the Viola part of Beethoven's Symphony No. 9, Movement IV, covering measures 130 to 169. The score is written in 2/5 time with a key signature of two sharps (F# and C#). The notation includes various musical symbols such as notes, rests, and dynamic markings. Measure numbers 130, 138, 146, 154, 162, and 169 are indicated at the beginning of their respective staves. Dynamic markings include *cresc.* (crescendo) and *p* (piano). A bracket labeled 'A' spans measures 138 to 145, and another bracket labeled 'B' spans measures 162 to 168. The score concludes with a final measure, 169.

**YAO:**

**Mendelssohn: Midsummer Night's Dream, Scherzo measure 17 to reh. D**

Nº 1.